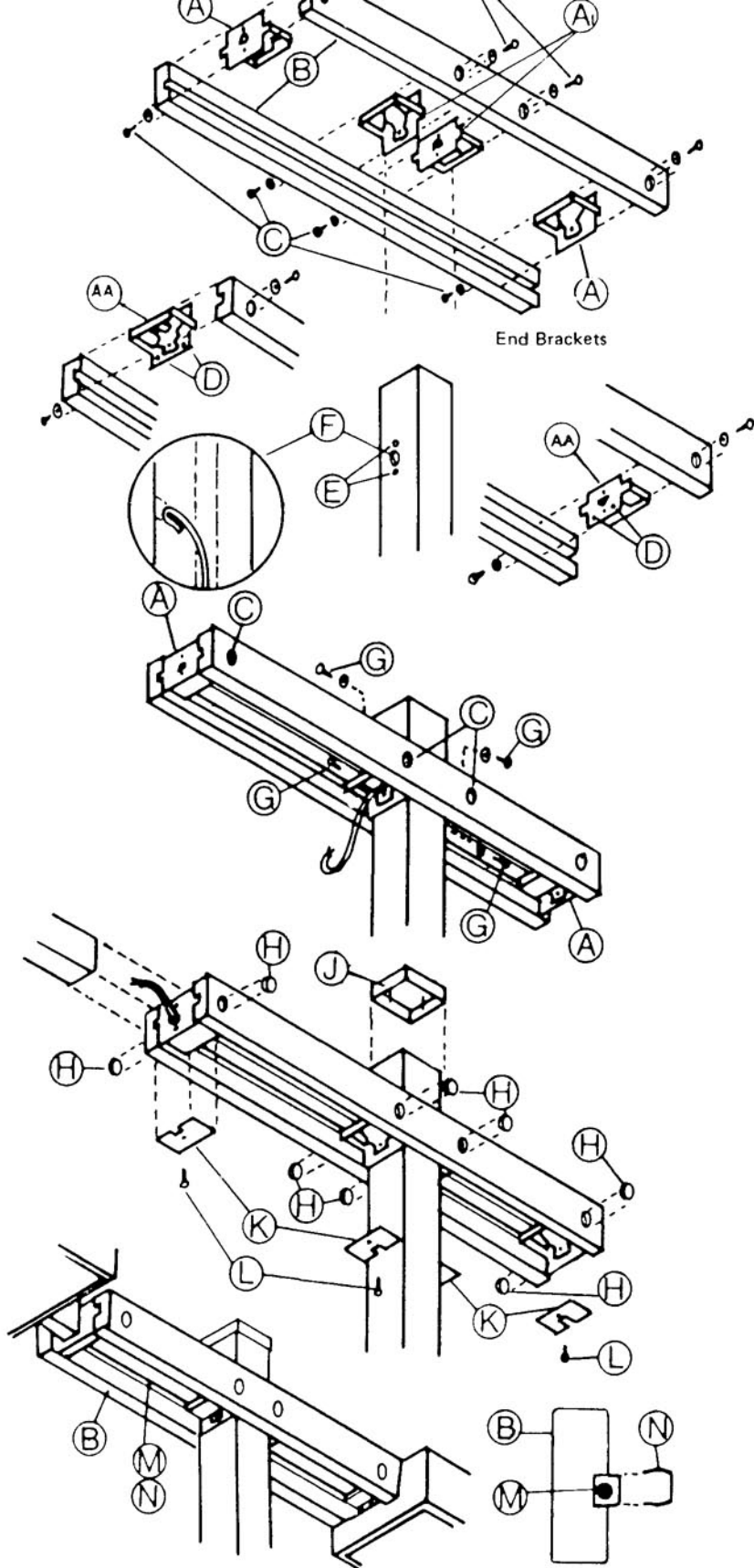


## INSTRUCTIONS FOR TIMBER WOOD LIGHTING STANDARDS TWO-WAY (TYPE B) CROSSARMS

Follow these instructions for proper assembly and installation of Type B crossarms. For installation of luminaires, standard pole, bracket arms and adapters, follow instructions furnished with those articles.

Provide suitable work support. Remove protective wrapping from crossarms only when assembly and erection work is ready to begin. See finishing note, reverse side.

**NOTE: The aluminum channels now being included with the crossarms are designed to provide added strength to the assembly and should not be removed.**



1. Locate and bore holes in lighting standard for brackets, raceway access and cross-feeding wire. See fabrication instructions, reverse side. Note precaution regarding accuracy of pilot hole location.
2. Fish circuit wire through raceway. Bend wire back into access hold "F".
3. Preassemble crossarms "B" and brackets "A" using  $\frac{1}{2}$ " bolts "C" with washer in counterbored holes of crossarm. Tighten bolts to snug position, to seat bracket key into wood keyway, then *back off* about one turn. For inboard mounting of luminaires, end brackets are mounted as indicated "AA". See reverse side for boring of hole "E".
4. Slip preassembled crossarms over top of pole into position at prebored lagbolt holes "E" and access hole "F". Wire may now be hooked and pulled through bracket.
5. Fasten bracket to standard pole with  $\frac{3}{8}$ " bolts, "G" and washers. Use the thru bolt at the top and the  $1\frac{3}{4}$ " lag bolt at the bottom. Check for perpendicular alignment of crossarms. Fully tighten, making sure bracket faces are seated tight against face of pole.
6. Now tighten all  $\frac{1}{2}$ " bolts "C". (Do not crush wood under washers.)
7. Insert plastic plugs "H" into counterbored holes in crossarms and press firmly into place.
8. Mount cap "J" over top of standard.
9. Mount and connect luminaires. Electrical feed wires are run to opposite side and top as needed. Leave just enough wire to lay snug and trim in crossarm groove "M".
10. Cover wires in crossarm raceway groove "M" with rigid PVC raceway cover "N". Fasten bracket cover plate "K" with furnished machine screws "L". Wire exit bracket through slot under cover plate.
11. Erect *complete assembly* in accord with instructions furnished with lighting standard.